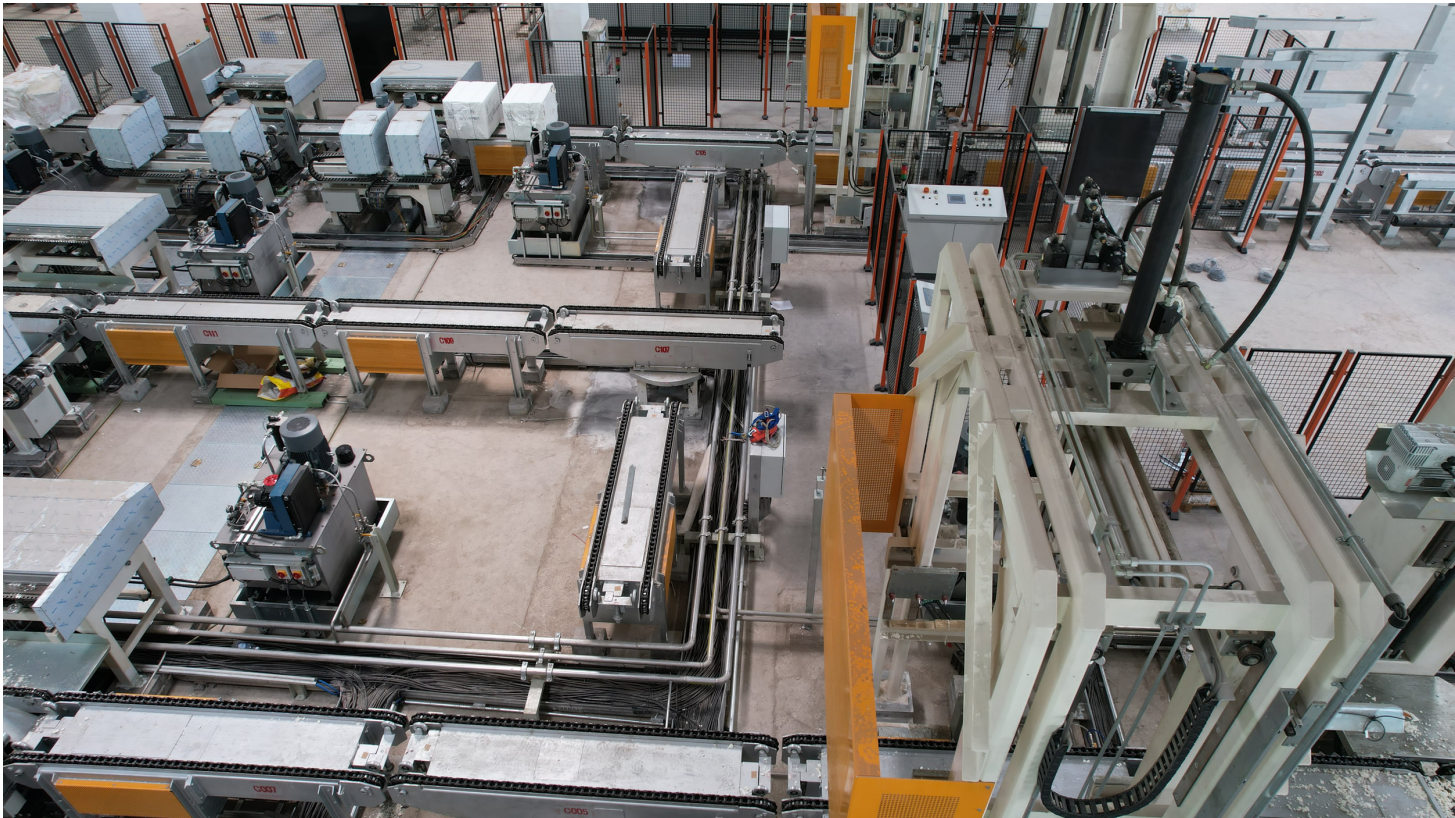


MMH-CC – Chain Conveyor for Virgin Pulp

The most efficient and reliable conveying solution for virgin pulp handling system.



MMH-CC – Chain Conveyor for Virgin Pulp

The most efficient and reliable conveying solution for virgin pulp handling system.

Technology

The Meri Chain Conveyor of different and highly efficient designs represents a state-of-the-art solution with ease and maximized productivity in virgin pulp handling systems.

Chain Conveyor – Loading CC-L is used for unit loading at feeding zone in system. Chain Conveyor CC is used for transportation and buffering of units and single bales. Chain Conveyor – Dewatering CC-D is used for manual dewatering and wrapping removal.

Chain Conveyor – Rotating / Travelling & Rotating CC-R/TR, stationary or travelling, are used when the direction of transportation in the virgin pulp handling system needs to be changed. This is suitable for units as well as for bales.

Designed for continuous operation, the machine is capable of running 24/7 for up to 10,000 hours straight. Its solid and robust construction reduces downtime and operating costs, making it the ultimate solution for fast, reliable, and cost-effective conveying in the paper industry.

Features

- Safe and stable conveying in virgin pulp handling system
- Long lifetime due to solid and robust construction
- The conveyors can be integrated into existing systems
- Reduced personnel costs
- Controlled by top level PLC (called feeding line system control PLC)
- Suitable for units as well as for bales

Why to buy

- Minimized commissioning time on site due to workshop test
- Low operating cost (OPEX)
- Easy servicing and maintenance ensure maximum operational efficiency
- High capacity with lowest maintenance
- High availability and durable design, ensuring reliable performance



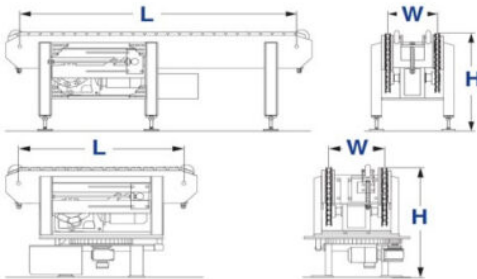
Typical & Proven Process

- Conveying in virgin pulp handling system

See the following Products as well

- MMH-DVIR the Dewiring Machine for Single Bale
- MMH-UDM the Dewiring Machine for Pulp Unit
- MMH-DSU the Destacker for Pulp Unit
- MMH-MD the Metal Detector for Single Bale
- SC-Slat conveyors for Bale Feeding

Specifications



	CC	CC-R
Height (H) [mm]	1025	1025
Length (L) [mm]	depending on the system	1285 / 2285
Width (W) [mm]	450	450
Weight [kg]	depending on the system	500 / 900
Installed Power [kW]	ranging from 0.37 – 3 kW	



Meri Environmental Solutions GmbH

Bodenseestr. 113
81243 Munich, Germany
Tel. +49 89 59 33 44
info@meri.de

Voith Meri Environmental Solutions, Inc.

2620 E. Glendale Avenue
P.O. Box 1262
Appleton WI 54911-1262, USA
Tel. +1 920 734-8485
info@meriusa.com

Meri Sistemas e Tecnologia Ltda.

R. Friedrich von Voith, 825
São Paulo – SP – 02995-000, Brasil
Tel. +55 11 3944-6644
meribrasil@meribrasil.com.br

**Meri Environmental Technology
(Kunshan) Co.,Ltd.**

No. 665 Jiande Road, Zhangpu Town,
Kunshan City, 215321 Jiangsu Province,
China
Tel. +86 51 28 68 90 834
info@meri.cn

www.meri.de



Note: All product-related data and information in this publication shall serve for information purposes only. They shall not be interpreted or intended to represent any kind of warranty or guarantee. The only legally binding statements are those contained solely within our quotations. Errors and omissions excepted. Technical data are subject to change.