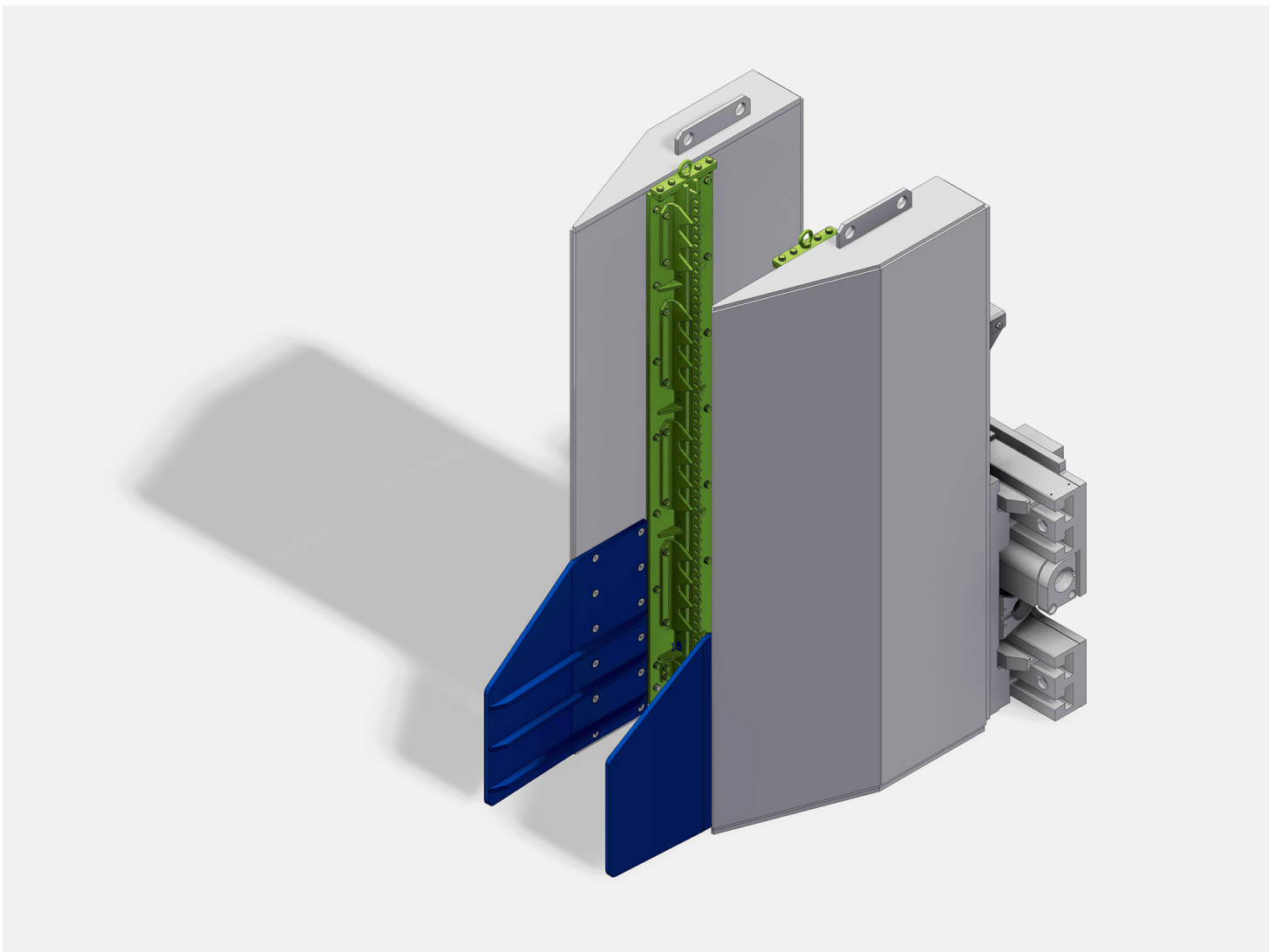


# MMH-DMOB – Meri Material Handling Mobile De-wiring

The DMOB is used to clamp, transport, de-wire and distribute material from bales



# MMH-DMOB – Meri Material Handling Mobile De-wiring

The DMOB is used to clamp, transport, de-wire and distribute material from bales

## Technology

The DMOB is used to clamp, transport, de-wire and distribute material from bales.

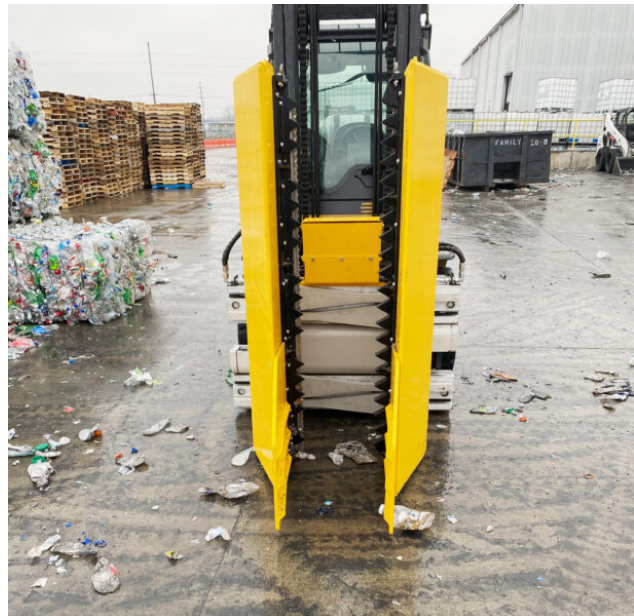
The Bale De-wiring Machine-Mobile DMOB for recycled material bales is the ideal solution for small operations or low budgets. It consists of a gripper and a knife unit, is hydraulically operated, and is designed to be mounted on your lift truck. The required power is provided by the lift truck's hydraulic system. The Bale De-wiring Machine-Mobile allows the driver to safely cut and remove the horizontal binding wires from the bale sides without leaving the driver's seat.

## Features

- 2 x arms made of formed and welded carbon steel plate
- Robust and durable construction takes the wear and tear of bale loading/feeding environment

## Why to buy

- Removes operator interaction with wire cutting and removal from baled material
- No need for off-truck operator to manually cut wires
- Eliminates downtime due to "wire balls" in pulper
- Break up bales while de-wiring to ensure system is fed with loose, homogenous flow



## Typical & Proven Process

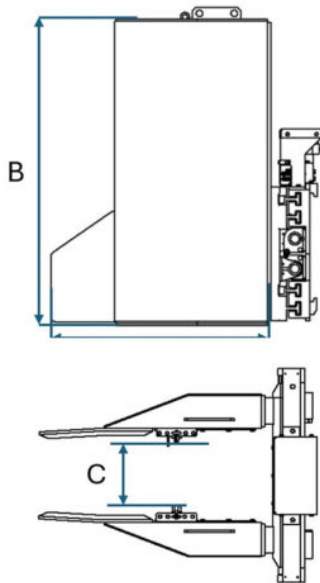
Recycled Bale De-wiring Applications:

- Paper
- Textile
- Plastics
- Metal
- Agricultural
- Foam

## See the following Products as well

- MMH-WCMA – Meri Material Handling Wire Cutter
- MMH-DLAT
- MMH-DTOP – Meri Material Handling Automatic De-wiring Machine
- MMH-WCOI
- MMH-FC – Meri Material Handling Feed Conveyor

## Specifications



		MMH-DMOB 1750
Length (A)	[mm]	1300
Height (B)	[mm]	1750
Opening (C)	[mm]	343-1867
Machine Capacity		<30 bales / hour
Max Bale Dimensions		Not to exceed: - Arm Height - Opening capabilities of clamp - Bale length is only limited by CG of fork truck
Bale Loading Orientation		Wires parallel to fork truck travel on sides of bale



**Meri Environmental Solutions GmbH**

Bodenseestr. 113  
81243 Munich, Germany  
Tel. +49 89 59 33 44  
info@meri.de

**Voith Meri Environmental Solutions, Inc.**

2620 E. Glendale Avenue  
P.O. Box 1262  
Appleton WI 54911-1262, USA  
Tel. +1 920 734-8485  
info@meriusa.com

**Meri Sistemas e Tecnologia Ltda.**

R. Friedrich von Voith, 825  
São Paulo – SP – 02995-000, Brasil  
Tel. +55 11 3944-6644  
meribrasil@meribrasil.com.br

**Meri Environmental Technology  
(Kunshan) Co.,Ltd.**

No. 665 Jiande Road, Zhangpu Town,  
Kunshan City, 215321 Jiangsu Province,  
China  
Tel. +86 51 28 68 90 834  
info@meri.cn

[www.meri.de](http://www.meri.de)



**Note:** All product-related data and information in this publication shall serve for information purposes only. They shall not be interpreted or intended to represent any kind of warranty or guarantee. The only legally binding statements are those contained solely within our quotations. Errors and omissions excepted. Technical data are subject to change.